

Interactive book series encourage a love of reading.



Activity Storybooks

Exciting stories are brought to life with audio and provide sequenced skill-building activities.

PreK+

Grades K+



© Disney TM & © DreamWorks Animation



© 2007 VIACOM INTERNATIONAL INC. All Rights Reserved. Created by Stephen Hillenburg. © 2007 VIACOM INTERNATIONAL INC. All Rights Reserved. © Disney/Pixar



Copyright © 1999 by Callaway & Kirk Company LLC. © 2007 Scholastic Inc. All rights reserved. Based on the I SPY book series, text by Jean Marzollo, photographs by Walter Wick.



TM & © CARTOON NETWORK (s/07)

Children's Classics

Rich, engaging classics are told by popular characters and focus on vocabulary and comprehension.



© 2007 Simon & Schuster, Inc. TM & © Penguin Group (USA) Inc. © 2007 Ian Falconer



Text © 2007 by Jane O'Connor. Illustrations © 2007 by Robin Preiss Glasser. © 2007 Simon & Schuster, Inc.

Transitional Readers

Early chapter books in three genres—mysteries, historical fiction, and reader's theater—help students transition to independent reading.



© 2003 Sandy Asher © 2003 Peter and Connie Roop © 2003 Stephen Krensky



© 2003 Stephen Krensky © 1998 Marc Brown © 2003 Peter and Connie Roop



Tag™ School Reading System User Guide & Instructions

This guide contains important information about setting up and managing the Tag School Reading System. Please keep it for future reference.

Visit titlewave.com for more information.

With every touch of the Tag™ School Reader, words talk, pictures sing, and stories come alive!

The TAG School Reading System engages students' senses to make reading a rich, interactive experience. TAG School library books use familiar characters to explore a variety of stories and inspire a love of reading. With TAG School, students can learn at their own pace, developing reading skills and the confidence they need to become fluent readers.

What's included with the Tag School Reader:

- TAG School Reader
- Headphones
- *Ozzie and Mack* Activity Storybook
- USB Cable
- LeapFrog School Connect CD



Table of Contents

| | |
|--|-----------|
| Getting Started | 2 |
| Battery Installation | |
| Get Ready to Read with <i>Ozzie and Mack</i> | |
| LeapFrog® School Connect Application | |
| System Requirements | 3 |
| Install the LeapFrog School Connect Application | 3 |
| Set Up Your Tag™ School Readers | 3 |
| Download Audio for Tag School Reader Books | 4 |
| Sync Audio Files with Your Tg School Readers | 5 |
| View Audio Files on Your Tag School Readers | 6 |
| Tag School Reading System | |
| Let's Play Tag—Reading with the Tag School Reader | 7 |
| Tag School Reader Library | 8 |
| Classroom Management | 9 |
| Safety, Troubleshooting, and Warranty Information | 11 |



Getting Started


Battery Installation

1. Push down the screw on the battery compartment and turn counterclockwise with a screwdriver or coin.
2. Remove the battery cover.
3. Insert two AAA batteries as shown in the polarity (+/-) diagram inside the battery compartment. You can use either disposable alkaline batteries or NiMH rechargeable batteries.

Note: With certain battery types, the TAG™ School Reader may incorrectly report the battery charge state. You should change the batteries as soon as you hear the low battery warning.

4. Replace battery door securely and tighten the screw.

Get Ready to Read with Ozzie and Mack

1. Press the On/Off button to begin. The green power light will shine when the TAG School Reader is on.
2. To begin, touch the tip of the TAG School Reader to an image or word in the included *Ozzie and Mack* storybook.
3. Touch the “Game” icon  where it appears throughout the book to experience interactive learning activities.
4. You can hear the entire story read aloud for *Ozzie and Mack*, and a selection of other titles you have downloaded to your Reader, by touching your TAG School Reader to the book and pressing the Audio Book Button.



LeapFrog® School Connect Application

System Requirements

- Windows® XP or Windows Vista™ operating system
- Pentium® III 500 MHz processor (700 MHz or higher recommended)
- Monitor resolution of at least 1024 x 768
- Available USB port
- 512 MB RAM
- 300 MB free disk space
- Internet connection
- Microsoft® Internet Explorer® version 6 or higher
- CD reader

Install the LeapFrog School Connect Application

1. Use the included CD to install the application on your computer.
2. Follow the instructions on the screen to complete the installation.

Note: You must have an Internet connection to install the LeapFrog School Connect application.

Set Up Your Tag™ School Readers

1. Double-click the **LeapFrog School Connect** software icon on your desktop.
2. Connect a TAG School Reader to the computer using the USB cable provided.
3. A window will appear indicating “New TAG School Reader Detected.” Enter a name in the “Device Name” field. We recommend that you do not use a person’s name as the device name if you plan to have multiple students share the TAG School Readers. You might consider a naming convention that uses animal names or colors.



Note: You may want to label each TAG™ School Reader with the device name you created. Write the name on a piece of masking tape or other easy peel-off label and affix the label to the TAG School Reader.

- Click on Terms of Service to read through the agreement and click the check box to agree. You can also access the LeapFrog® Privacy Policy by clicking on the link in this window.
- Click "Submit" to complete the setup for this TAG School Reader.
- To add additional TAG School Readers, repeat steps 2 through 5 for each TAG School Reader in your classroom.

Download Audio for Tag School Reader Books



- Click on the "Download" tab in the LeapFrog School Connect application.

Note: You must have an Internet connection to connect to the Download Center.
- Scroll through the page to find the TAG School book titles in your classroom kit.
- Choose a title and click "Download Audio" to save the audio file to your library.
- Repeat steps 2 and 3 until all titles in your classroom kit have been downloaded.

Sync Audio Files with Your Tag™ School Readers



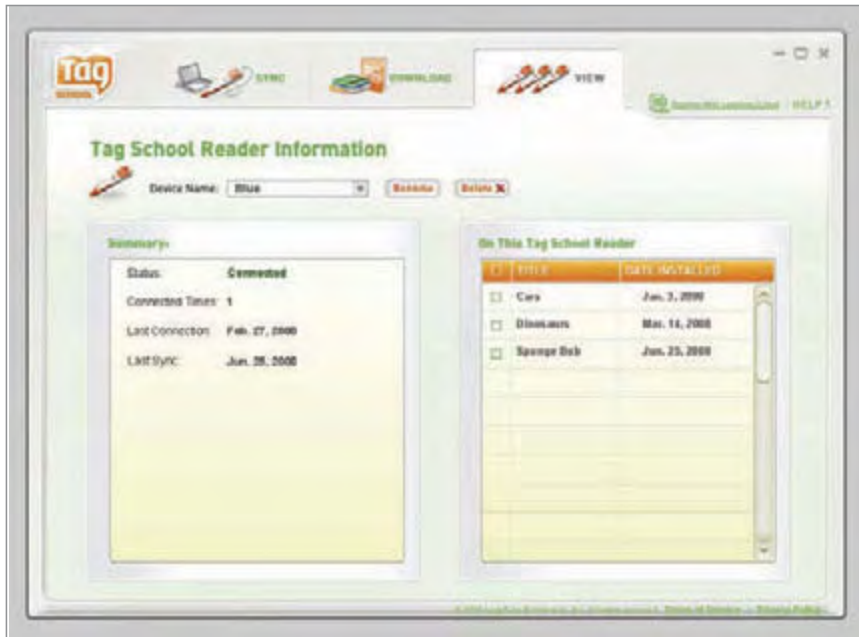
- Connect a TAG School Reader to the computer using the USB cable provided.
- Click on the "Sync" tab in the LeapFrog® School Connect application.
- The audio files you have downloaded to your library appear in the box on the left-hand side of the page. Move these files to the connected TAG School Reader by selecting the check boxes next to the desired titles and then clicking on the "Add" arrow.

Note: If a desired title is not in your library, follow the instructions under "Download Audio for TAG School Reader Books."

- To remove an audio file, select the check box next to the title's name in the "TAG School Reader" list. Then click the "Remove" arrow.
- Click the "Sync to Finish" button at the bottom of the page to save the changes to the connected TAG School Reader.
- To add or remove audio files on other TAG School Readers, disconnect the TAG School Reader you were just using and connect another TAG School Reader to the computer using the USB cable. Repeat steps 3 through 5.

Tag™ School Reading System

View Audio Files on Your Tag™ School Readers



1. Click on the “View” tab in the LeapFrog® School Connect application.
2. On this screen you can view the audio files that were most recently loaded to all TAG School Readers associated with this application. Use the drop-down menu near the top of the page to switch between TAG School Readers by their device name.
3. View the titles in the “On This TAG School Reader” box to see the titles loaded to the selected TAG School Reader.
4. To add or remove audio files from a TAG School Reader, connect the TAG School Reader to the computer using the USB cable, click on the “Sync” tab and follow the instructions on the previous page to “Sync Audio Files with Your TAG School Readers.”

Let’s Play Tag—Reading with the Tag School Reader

Once the audio files have been downloaded to the TAG School Readers, students can begin their own interactive reading. The diagram below shows the icons used to navigate through TAG books.

Note: Depending on the book title, other icons may appear to introduce reading tips and other information.

Read One Page at a Time:

Touch this button to hear a single story page.

Read the Whole Story:

Touch this button to hear the entire story read aloud. A special chime will let you know when it’s time to turn the page.

Repeat a Question:

Touch this button to hear a question again.

Stop:

Touch this button to stop a story, game, or song.

Play a Game:

Touch this button to play a game.



Play a Leveled Game:

Some games have levels. You’ll know when you see these three buttons showing one, two, and three stars.

Connect:

Connect the TAG School Reader to your computer to download audio for books.

Tag™ School Reader Library

Students from Preschool through Grade 3 will benefit from this exciting interactive reading system. The series in the TAG School Reader library include activity storybooks, children's classic titles, and transitional reader books.



Activity Storybooks
PreK+

Early literacy skills

Activity Storybooks
Grades K+

Skill development and comprehension

Children's Classics
Grade K–2

Vocabulary and comprehension

Transitional Readers
ATOS Levels 2.0–3.0

Transitioning readers to fluency



Activities reinforce skills taught throughout the stories and give students the opportunity to practice what they have learned. A variety of captivating activity types—including reader's theater, story sequencing, word analysis, vocabulary building, and many more—make the reading journey fun and exciting for all students.

Classroom Management

Tag™ School Reading System

The following components are available in the TAG School Reading System:

- TAG School Readers
- Headphones for quiet study
- One or more copies of the books from the library series
- One or more rechargeable battery chargers
- Sets of rechargeable batteries
- One or more classroom storage boxes, which conveniently hold all your books and TAG School Readers



Safety, Troubleshooting, and Warranty Information

Classroom Setup

The setup you choose for your classroom will depend on how many TAG™ School Readers you have and your preferred instructional model.

- **Reading Center:** You may wish to set up a reading center (or add TAG School Readers to a current center) and have students share the books and TAG School Readers.
- **One-to-one:** You may want students to have their own TAG School Reader and work individually, using a one-to-one implementation model.

Home-School Connection

TAG School Readers and books are portable and easy to use outside the classroom, making them suitable for a home-school connection program. You may want to set up a check-out/check-in system that parents agree to before you send the materials home.

Activities and Resources

Want more student activities for your TAG School books? Skill-based activities supporting the TAG School book series are available in the online program **Link to Lessons**. Link to Lessons is offered as a three-year classroom subscription and includes more than 6,000 discrete activities for literacy development and reading practice—all aligned to state standards. Visit LinkToLessons.com to learn more.



Instructions for Care

FOR INDOOR, DRY-LOCATION USE ONLY

Keep food and beverages away from product. Do not spill liquid of any kind on this product as it may render it inoperative. Clean with a slightly damp cloth (cold water). Disconnect from USB cable before cleaning. Do not use soap, detergent, or other chemicals. Never submerge the unit in water. Allow to dry before re-use. Avoid prolonged exposure to extreme temperatures and direct sunlight. Avoid dropping the unit. Never try to dismantle it. Avoid exposing product to extreme temperatures.

Only adults should install or program product, or install batteries.

Seul un adulte doit installer ou programmer le produit ou installer les piles.

Note: Replace batteries when notified by the Low Battery indicator.

CAUTION: Routinely check this product for proper and safe condition. If there is any damage or broken parts, remove product from use.

ATTENTION: Vérifiez régulièrement que ce jouet est en bon état et qu'il ne présente pas de danger. Dans le cas contraire (par exemple, s'il est cassé à certains endroits), tenez ce jouet hors de portée des enfants.

Battery Information

Requires two AAA (called LR03 in some countries) NiMH rechargeable batteries or disposable alkaline batteries, not included (do not mix battery types in product).

Battery Removal and Installation Instructions

1. Open the battery door with a screwdriver, coin, or other household tool.
2. If used or spent batteries are present, remove these batteries from the unit by pulling up on one end of each battery.
3. Install new batteries as shown in the polarity (+/-) diagram inside the battery compartment.
4. Replace battery door securely.

Battery Safety

Batteries are small objects. Batteries must be replaced by an adult. Follow the polarity (+/-) diagram in the battery compartment. Promptly remove dead batteries from the product. Dispose of used disposable batteries properly. Remove batteries for prolonged storage. Only batteries of the same or equivalent type as recommended are to be used.

DO NOT incinerate used batteries.

DO NOT dispose of batteries in fire, as batteries may explode or leak.

DO NOT mix old and new batteries or types of batteries (i.e., alkaline/rechargeable).

DO NOT recharge non-rechargeable batteries.

Rechargeable batteries are only to be charge under adult supervision.

Rechargeable batteries are to be removed from the toy before being charged.

DO NOT short-circuit the supply terminals.

Sécurité relative aux piles

Les piles sont des objets de petite taille. Le remplacement des piles doit être effectué par un adulte. Respectez le schéma de polarité (+/-) reproduit dans le compartiment des piles. Enlevez rapidement les piles usagées du jouet. Suivez les instructions adéquates pour vous débarrasser des piles usagées. Retirez les piles en cas de non-usage prolongé. Utilisez uniquement des piles ou accumulateurs du type recommandé ou d'un type équivalent. Les piles incluses dans le produit lors de l'achat sont uniquement destinées aux démonstrations en magasin et doivent être remplacées pour améliorer les performances du produit.

NE PAS incinérer les piles usagées.

NE PAS jeter les piles au feu car elles peuvent exploser ou fuir.

NE PAS mélanger piles usagées et piles neuves, ni différents types de piles (c'est-à-dire alcalines/rechargeables).

NE PAS recharger des piles non rechargeables.

Les piles rechargeables ne doivent être chargées que sous la supervision d'un adulte.

Les piles rechargeables doivent être retirées du produit avant d'être chargées.

NE PAS court-circuiter les terminaux d'alimentation.

USB Cable

Use only the USB cable provided by LeapFrog Enterprises, Inc. Using any other cable may exceed FCC and other regulatory emissions limits. The USB cable is not a toy. Disconnect the product from the USB connection before cleaning. USB connectors and cable used with the product must be regularly examined for damage to the cord, plug, and other parts and, in the event of such damage, the cable must not be used until the damage has been repaired.

Câble USB

Utilisez exclusivement le câble USB fourni par LeapFrog Enterprises, Inc. L'utilisation d'un autre câble peut dépasser les limites de la FCC (Commission fédérale américaine des communications) et autres limites réglementaires en matière d'émission. Le câble USB n'est pas un jouet. Déconnectez le jouet du port USB avant d'entamer toute opération de nettoyage.

Important Safety Instructions

This guide contains important information. Please keep it for future reference.
This product is not intended for children under 3 years old.

⚠ WARNING: Cords are a strangulation hazard. Keep out of reach of children under 3 years of age. Children pulling on the cord could cause the computer monitor, or other equipment to which the device is connected, to fall, with the possibility of property damage, serious personal injury, or death. Adult supervision required during play.

⚠ AVERTISSEMENT: Les cordons peuvent représenter un risque d'étranglement. Tenez-les hors de portée des enfants de moins de 3 ans. En tirant sur le cordon, un enfant peut causer la chute de l'écran de l'ordinateur, ou d'un autre appareil connecté à ce dispositif et provoquer des risques de dommages matériels, de blessures graves, voire même la mort. L'utilisation de ce jouet doit avoir lieu sous la supervision d'un adulte.

PROTECT YOUR HEARING

⚠ Long-term exposure to loud sounds at high volume may result in permanent hearing loss. When using headphones or ear buds, it is recommended that the product is listened to at lower volumes for shorter periods of time. Set the volume while in a quiet environment; turn the volume down if you cannot hear people speaking near you. Limit the listening time to 90 minutes, followed by a quiet period. The louder the volume, the less time required before your hearing may be affected. If you experience ringing in your ears or hear muffled speech, stop listening and have your hearing checked. When using the product without headphones or ear buds, do not hold it or place it near the ears.

PROTÉGEZ VOTRE OÛIE

⚠ Une exposition durable à des sonorités trop fortes peut entraîner une perte définitive de l'ouïe. Lorsque vous utilisez le casque ou les écouteurs bouton, il est conseillé de baisser le volume et réduire le temps d'écoute. Réglez le son lorsque vous êtes dans un endroit calme et baissez-le si vous n'entendez pas les personnes qui parlent autour de vous. Limitez le temps d'écoute à 90 minutes, puis accordez-vous un moment de tranquillité. Plus le volume est élevé, plus il y a de chances que votre ouïe soit rapidement touchée. En cas de bourdonnement dans les oreilles ou si vous entendez des voix sourdes, arrêtez immédiatement d'écouter ce produit et faites contrôler votre ouïe dans les plus brefs délais. Lors de l'utilisation du produit sans écouteurs ou sans écouteurs boutons, ne le tenez ou placez pas proche de vos oreilles.

Cleaning the Tag™ School Reader

The optical reader is in the opening behind the Reader Tip. If the surface requires cleaning, use a cotton swab and a small amount of alcohol to clean the lens. Do not use an excess amount of liquid; the liquid should not get inside the Reader.

Troubleshooting

| Symptom | Try This |
|--|---|
| Reader does not turn on or does not respond. | <ul style="list-style-type: none"> • Make sure the ON/OFF button has been pressed ON • Make sure batteries are correctly installed • Make sure battery cover is securely attached • Remove batteries and put them back in • Clean battery contacts by rubbing lightly with a soft eraser and then wiping with a clean and dry cloth • Install new batteries |
| Reader operates erratically or makes loud noises. | <ul style="list-style-type: none"> • Turn Reader off and install new batteries |

FCC NOTICE:

This device complies with Part 15 of the FCC rules. Operation is subject to the following two conditions:

- 1) This device may not cause harmful interference, and
- 2) This device must accept any interference received, including interference that may cause undesired operation.

This equipment has been tested and found to comply with the limits for a Class B digital device pursuant to Part 15 of the FCC rules. These limits are designed to provide reasonable protection against harmful interference to radio communications. Because this product generates, uses and can radiate radio frequency energy, there can be no guarantee that interference will not occur. If this product does cause interference to radio or television reception (you can check this by turning the product off and on while listening for the interference), one or more of the following measures may be useful:

- Reorient or relocate the receiving antenna
- Increase the separation between the product and the radio or the TV
- Consult the dealer or an experienced TV-radio technician for help

NOTE: Changes or modifications to this unit not expressly approved by LeapFrog Enterprises, Inc., could void the user's authority to operate the equipment.

This Class B digital apparatus complies with Canadian ICES-003.

Cet appareil numérique de la classe B est conforme à la norme NMB-003 du Canada.

Environmental Phenomena

- The unit may malfunction if subjected to radio-frequency interference. It should revert to normal operation when the interference stops. If not, it may become necessary to turn the power off and back on, or remove and reinstall the batteries.
- In the unlikely event of an electrostatic discharge, the unit may malfunction and lose memory, requiring the user to reset the device by removing and reinstalling the batteries.

LeapFrog School Customer Service (U.S.): Visit our website at www.LeapFrogSchool.com/support or call 800.883.7430, Mon–Fri, 8am–6pm, Central Time.

Canada Customer Service Contact: Visit our Canada Consumer Support website at <http://lfcanda.custhelp.com> 24 hours a day, or call (800) 701-LEAP (5327) during normal business hours.

IMPORTANT: If you have a problem with this product, please contact LeapFrog School Customer Service at 800.883.7430. If a return or replacement of the product is necessary, you will receive instructions for returning the product. Returns must have a Return Authorization Number from a Customer Service Representative to be accepted at our warehouse.

LEAPFROG SCHOOL WARRANTY: Products from LeapFrog School are warranted to the original purchaser only for a period of 12 months from the original purchase date, under normal use and service, against defective workmanship and material. This warranty is void if products are damaged by accident or other unreasonable use, neglect, abuse, battery leakage, improper installation, improper service, or other causes not arising out of defects in workmanship or materials. Repair or replacement as provided under this warranty is the exclusive remedy of the purchase. LeapFrog School shall not be liable for any incidental or consequential damages for breach of any express warranty on our products. Any implied warranty of merchantability or fitness for a particular purpose on our products is limited to the duration of this warranty. Some states do not allow the exclusion or limitation of incidental or consequential damages, or limitation on how long an implied warranty lasts, so the above limitations or exclusions may not apply to you. This warranty gives you specific legal rights and you may also have other rights, which vary from state to state. During the warranty period, your product(s) will either be repaired or replaced with the same or equivalent product at LeapFrog School's sole discretion when you return it, shipping prepaid and with proof of purchase date as instructed by a LeapFrog School representative. In the event that your product is replaced, the replacement will be continued under the original warranty or for 30 days, whichever is longer.

LEAPFROG, the LeapFrog School logo, TAG, and the TAG School logo are registered trademarks or trademarks of LeapFrog Enterprises, Inc. Copyright © 2008 LeapFrog Enterprises, Inc. All rights reserved. All other trademarks are properties of their respective owners. LeapFrog School is a division of LeapFrog Enterprise, Inc.

U.S. Office: LeapFrog School Division, 6401 Hollis Street, Suite 100, Emeryville, CA 94608

Tag School Reader Model: 91172-99903

titlewave.com